



Spring Newsletter 2013

Welcome to the first edition of the Yorkshire Peat Partnership Newsletter

In 2012/13 the Yorkshire Peat Partnership aims to restore 8 sites, covering an area of approximately 10,000 hectares. All restoration works are funded by Natural England, Yorkshire Water and the Environment Agency.

Restoration works 2012/13

This restoration season (winter 2012/13) works are taking place or have been completed on **8 sites**; **4** in the Yorkshire Dales, **2** in Nidderdale, **1** in the S. Pennines and **1** in the North York Moors.

If all ground works go to plan then YPP alongside skilled contractors will have completed the following amount of work: Blocked **759,437m** of grips, reprofiled **724,892m** of grips and **694,367m** of hags and gullies and revegetated **54.35 ha** of bare peat, for full details see [here](#).

We are hoping that the ground works will be completed by the end of March.

This is a substantial achievement and if you are interested, 700,000 m is roughly the distance from London to Paris and back again.

Unmanned Aerial Vehicles & Ground Penetrating Radar

Funding by Yorkshire Water has enabled YPP to commission UAV flights and GPR surveys over 3 restoration sites in Nidderdale. These are very exciting project advances as they will generate high resolution topographical models, colour infra-red imagery, accurate peat depth measurements and help quantify sub-surface peat piping.

This will enable us to accurately quantify not just restoration works but will allow us to look at surface and subsurface hydrology along with many other potential research and modelling applications.

Survey work 2012/13

This season, a total of **14** sites have or will be surveyed including; **8** sites in the Yorkshire Dales and **6** sites in Nidderdale.

In total the approximate area surveyed by the restoration officers is at least 5,000 hectares, testimony to the dedication of the officers!



Surveying will continue until the beginning of the bird breeding season at which point access will be limited until autumn/winter time.

Monitoring update

YPP with the help of keen volunteers are set to complete 2 more monitoring sites by the end of March enabling us to meet our target. Over 150 fixed point quadrats have been set up across sites already with more to come. YPP are still looking for **volunteers** so please contact us on the details below if you would like to help out.



Research update

“Restoration of blanket bog vegetation for biodiversity, carbon sequestration and water regulation” University of York and Defra. Soon it will be time to implement the experimental treatments which will consist of mowing, grazing exclusion and possibly Sphagnum application. These treatments will be the first in a series of experimental manipulations. It is a crucial time to ensure all stakeholders are involved in the decision making process. Click [here](#) to find out all about the project.



Leeds University [Workplace Co-operative](#) – YPP are working with Leeds University as part of their workplace cooperative scheme which places students with organisations to conduct a piece of research. YPP is working alongside Natural England to undertake high resolution peat depth and vegetation sampling. It should yield some interesting peat depth data for both YPP and the students as well as strengthen links between YPP and Leeds University.

PhD student [Phoebe Morton](#) who is being co-supervised by YPP as part of the Defra and University of York blanket bog management project is beginning to plan out her first year of field experiments. An area of interest for Phoebe is peat expansion and shrinkage. There are surprisingly few methodologies for this and even fewer researchers conducting such work so looking at shrinkage and expansion in the context of management could yield some very interesting and valuable data.

In the pipeline YPP is currently liaising with two MSc students for possible research projects. A University has shown interest in researching Sphagnum application with YPP, discussions on how to move this forward are being held. We are helping a PhD student from Leeds University find suitable sites for her research entitled **[“The Ecology of Natural and Artificial Peat Pools”](#)** , one research site in the Dales has been identified so far.

Workshops & Opportunities

Upland Management Workshop - As part of the Defra funded project; Restoration for blanket bog vegetation for biodiversity, carbon sequestration and water regulation” a stakeholders workshop was held on 25th February which brought together a wide variety of stakeholders interested in and affected by current upland heather-peatland management. The workshop helped to inform the treatment phase of the project. Information about the project can be found [here](#).

YPP and Leeds University students – A workshop was held on 4th March with the University of Leeds, [Sustainability Research Institute](#), School of Earth and Environment. The workshop helped students develop research skills, provide an opportunity to see an example of sustainable upland management and speak to key stakeholders. Students will have to report key outputs from the day which will become available at a later date. Click [here](#) for more info.



Wild Workshop – YPP will be running its first Yorkshire Wildlife Trust Wild Workshop. The workshop will focus on peat monitoring and restoration and will provide the opportunity for participants to develop their peatland vegetation monitoring skills as part of an afternoon of field work. The workshop will be held at [Nethergill Farm](#) on Saturday 8th June and more information will be available through the [Yorkshire Wildlife Trust](#) website nearer the time.

Other news

New member of the peat team – We now have an extra pair of hands to help with surveying over the coming months. Les Hughes has a background in journalism and has spent time helping restoration officers with surveying. His addition to the team is very welcome.

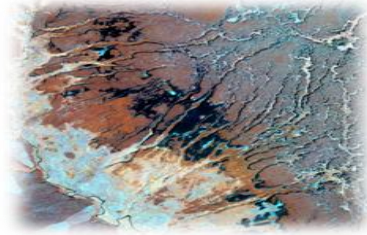


Helping to propagate upland plants – The Yorkshire Peat Partnership is working together with [MicroPropagation Services](#) to provide specimens of upland peat plants for propagation. YPP are currently collecting samples of species such as Cloudberry, Bilberry, Cranberry, Cotton grass and of course Sphagnum from the Yorkshire region in order to provide locally sourced plants for propagation and potentially future plug planting.



Yorkshire Water work in Nidderdale hits the news – Restoration work taking place in Nidderdale funded by Yorkshire Water and managed by YPP received press coverage last month. To read the article featured in the Ripon Gazette click [here](#). **Tim Thom on BBC Look North** – Tim Thom and Andrew Walker from Yorkshire Water talk about peatland restoration on BBC Look North. Click [here](#) to watch.

GIS support for the team – Agata Kozłowska an MSc student in GIS at the University of Leeds who voluntarily joined us for 2 mornings a week to help Mark with aspects of GIS has a new job. Her support and expertise contributed to the teams output in the short time she was with us and the hope is that her equally qualified husband can now fill the gap!



Useful information & links

Good news for UK peatlands - the [IUCN Commission of Enquiry on Peatlands](#) work has led to statement of intent from Environment Ministers to conserve and enhance the natural capital of peatlands in the UK and British Overseas Territories, together with a framework for action, [read here](#).

Carbon Savings from Peatlands – An interesting report by Scotland's [ClimateXChange](#) has been released. It details carbon savings from all peatlands carried out to date from 1990 and the potential for savings extending into the future to 2027. Click [here](#) for report.

Peat Free Times – A free weekly e news letter called [Peat Free Times](#) is available for subscription. It updates weekly on global peat news and any contributions are welcome.

IUCN peatland Programme Newsletter – The February addition of the IUCN Peatland Programme Newsletter is now out. Click [here](#) to read the newsletter.

A Facebook Page called Peat Researchers has been set up by a PhD student from the University of Bangor. It is a great platform to ask any peat related questions and find out about publications, jobs, workshops and conferences. Click [here](#) to find out more.

Please contact the Yorkshire Peat Partnership and find out more about us; Yorkshire Peat Partnership, Yorkshire Wildlife Trust, 1 St. Georges Place, York, YO24 1GN. Tel: 01904 659570. E mail: info@ypppartnership.org.uk. Website: www.ypppartnership.org.uk. Facebook: www.facebook.com/YorkshirePeatPartnership.

Twitter: https://twitter.com/ypp_peat